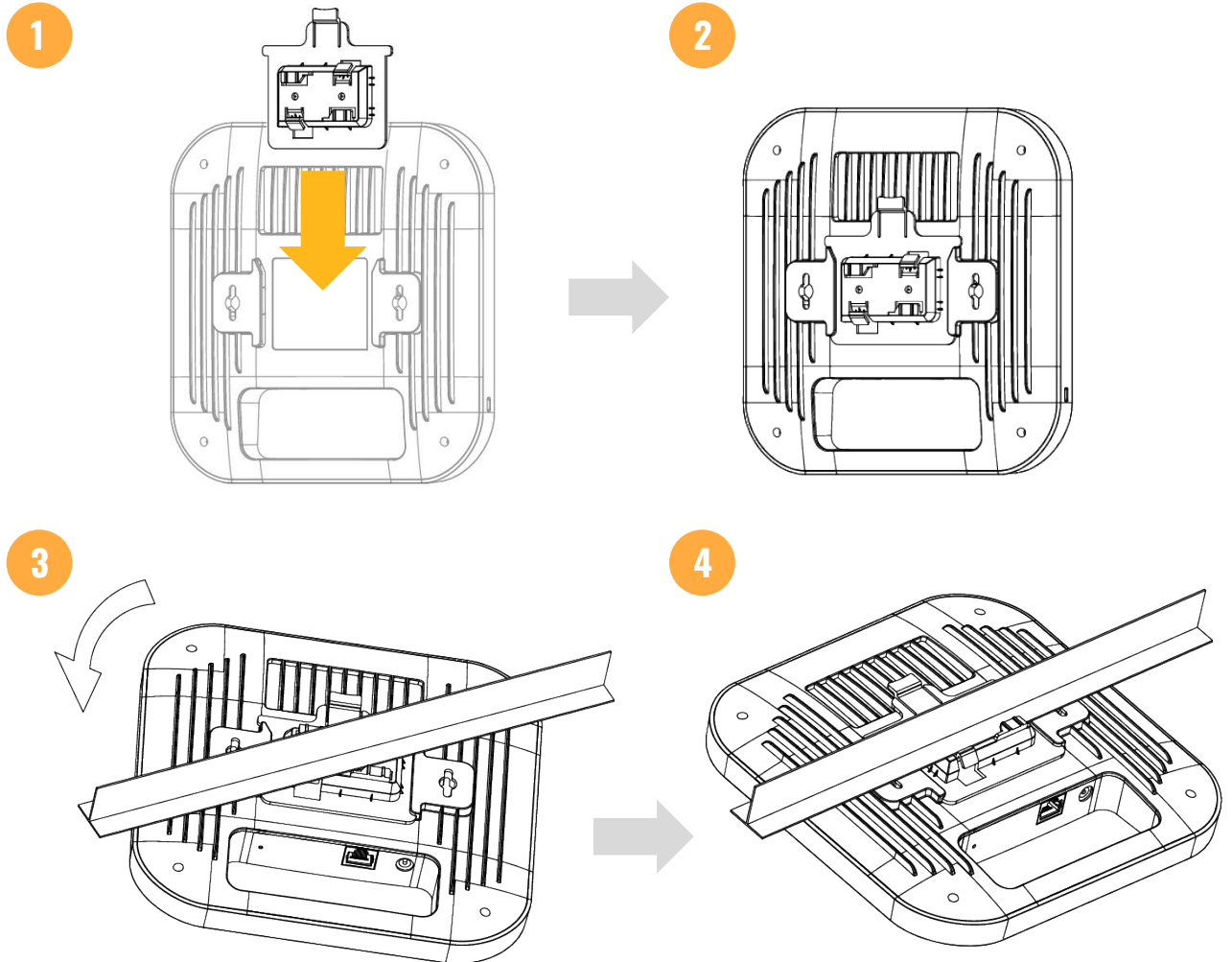
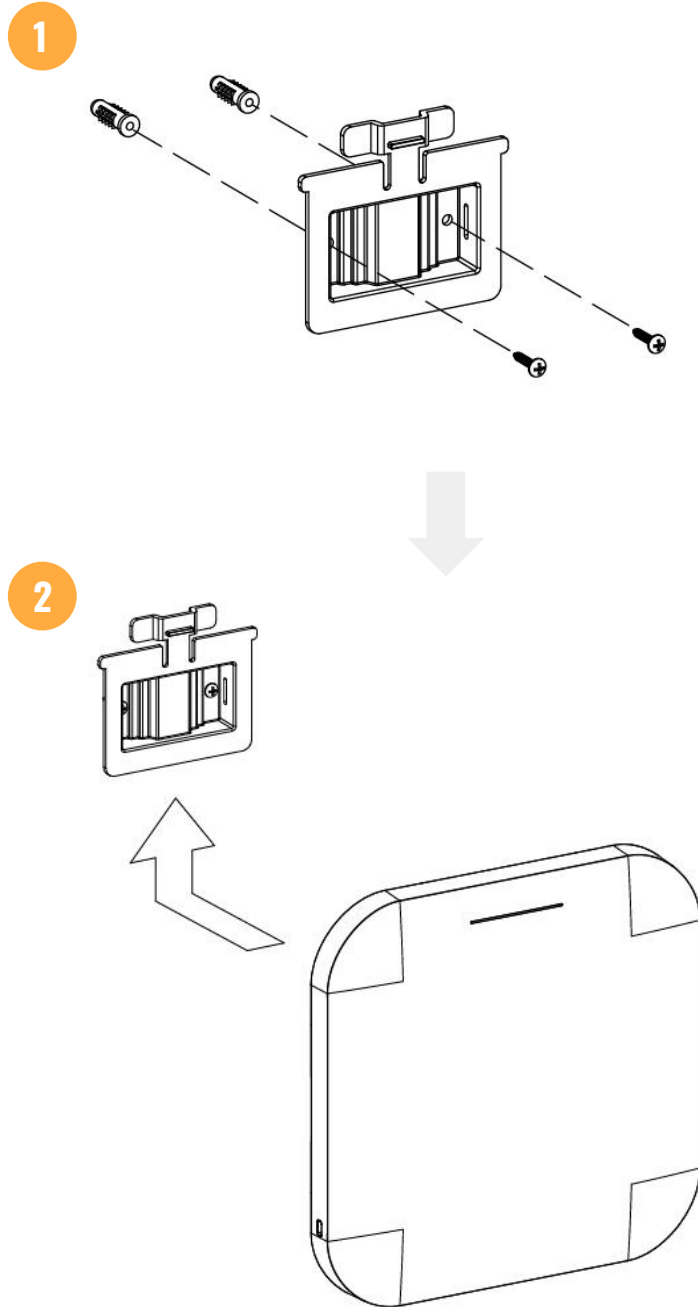


**Ceiling Mount****Steps:**

1. Slide the ceiling mount base into the slot of the Access Point.
2. Hold the Access Point with one hand to reach the other hand over the T-Rail sides of the bracket.
3. Then hook the stationary end of the ceiling mount bracket onto the T-Rail.

**Wall Mount****Steps:**

1. Continued from A, determine where the Access Point to be placed and mark location on the surface for the two mounting holes.
2. Use the appropriate drill bit to drill two 8.1mm diameter and 26mm depth holes in the markings and hammer the bolts into the openings.
3. Screw the anchors onto the holes until they are flush with the wall; screw the included screws into the anchors.
4. Place the Access Point against wall with the mounting screw heads.